



LAUNCH SERVICES FOR BOARDING AND DISEMBARKING OFF CHERBOURG



CONTACTS

E-mail : contact@pilotage-cherbourg.fr

Phone : + 33 (0) 233 205 123 mobile 24/24 : + 33 (0) 607 751 891

Address : 2 Quai General Lawton Collins - 50100 Cherbourg – FRANCE

PROCEDURE TO ARRANGE LAUNCH SERVICES OFF CHERBOURG

- **At least 3 days before arrival:** Vessel will advise **CHERBOURG PILOT STATION** with ETA by mail or by phone.
- **4 HOURS** before arrival at meeting point: Vessel will call **JOBOURG TRAFFIC** on **VHF channel 13**.
- **2 HOURS** before arrival at meeting point: Vessel will call **CHERBOURG SIGNAL STATION** to confirm ETA on **VHF channel 12**.
- **1 HOUR** before arrival at meeting point: Vessel will call **CHERBOURG SIGNAL STATION** to confirm ETA and ask for the side of Pilot ladder on **VHF channel 12**.

Station de pilotage de Cherbourg	EMBARQUEMENT TECHNICIEN / EQUIPAGE	ER-22.6	PCS 2 Embarquement - débarquement
		REV B-24 01 2024	

MEANS

Crew boarding and disembarking will be carried out using **Cherbourg Pilot Boats**.

OBSERVE STRICTLY OMI REQUIRED BOARDING ARRANGEMENT (see last sheet of this procedure)

Please keep a speed around **7 Knots** and prepare heaving line or nets.

Heaving line or nets must be checked before use. Diameter must be between 8 and 18mm and safe working load minimum 300 kg.

All boats are provided with AIS, three different pilot-boats can be used:

“CHERBOURG-PILOT 3”

or

“CHERBOURG-PILOT 4”

or

“CHERBOURG-PILOT 5”

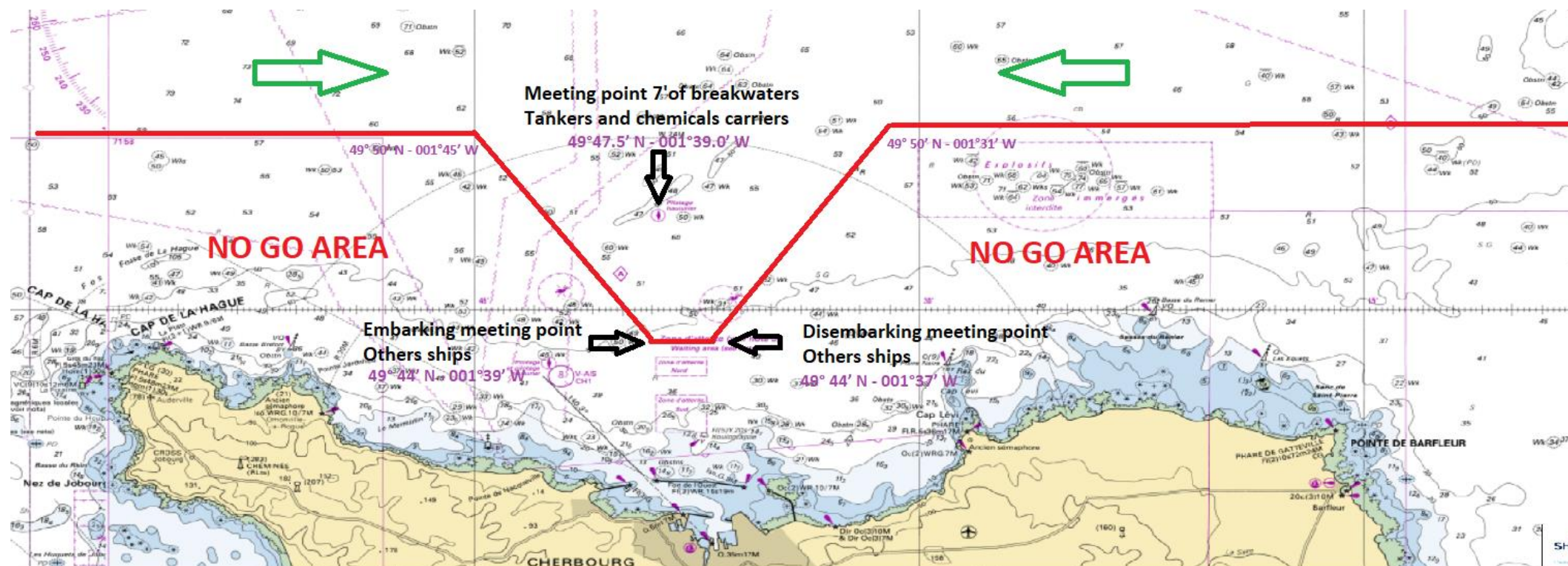
MEETING POINT FOR VESSEL **TANKERS, CHEMICALS and GAS CARRIERS**

7 NM North off Cherbourg breakwaters in position: $\varphi=49^{\circ}47.5' \text{ N}$ - $G=001^{\circ}39.0' \text{ W}$

MEETING POINTS **OTHERS SHIPS**

For vessel arriving by West, meeting point: $\varphi=49^{\circ} 44' \text{ N}$ - $G=001^{\circ}39' \text{ W}$

For vessel arriving by Est, meeting point: $\varphi=49^{\circ} 44' \text{ N}$ - $G=001^{\circ}37' \text{ W}$

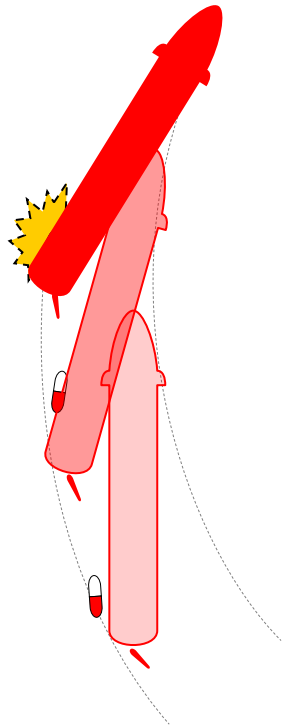


IMPORTANT NOTICE

The operation **is not completed** until the pilot boat is clear after boarding or disembarking. In order to perform a safe disembarkation we kindly ask you to:

- **Maintain course and speed** ordered by pilot boat before leaving the bridge

- **Keep lookout on pilot boat from the wing**
- **Keep watch on VHF 12**
- **Inform pilot boat** (VHF 12) in case you need to alter course and/or speed for safety reason
- **Wait confirmation** of pilot boat before altering to your intended transit course and speed

NOT SAFE**Changing** course**Increasing** speed**No lookout****SAFE****Steady** Course & speed**Lookout** Visual**VHF 12****Pilot boat clear from ship side**