



## CHERBOURG PILOT STATION FOR CHANNEL AND NORTH SEA PILOTS SERVICES



### CONTACT

E-mail : [contact@pilotage-cherbourg.fr](mailto:contact@pilotage-cherbourg.fr)

Phone : + 33 (0) 233 205 123      mobile 24/24 : + 33 (0) 607 751 891

Address : 2 Quai General Lawton Collins - 50100 Cherbourg – FRANCE

### PROCEDURE FOR DEEP SEA PILOT BOARDING AND DISEMBARKING OFF CHERBOURG

- **At least 3 days before arrival:** Vessel will advise **CHERBOURG PILOT STATION** with ETA by mail or by phone.
- **When disembarking a pilot, at least 24 hours** before arrival, captain **and** pilot must inform the pilot station of their intention by mail and by phone, indicating the name of the pilot and the deep-sea pilot company.  
When sailed from the last port, captain must confirm eta.
- **4 HOURS** before arrival at meeting point: Vessel will call **JOBOURG TRAFFIC** on **VHF channel 13**.
- **2 HOURS** before arrival at meeting point: Vessel will call **CHERBOURG SIGNAL STATION** to confirm ETA on **VHF channel 12**.
- **1 HOUR** before arrival at meeting point: Vessel will call **CHERBOURG SIGNAL STATION** to confirm ETA and ask for the side of Pilot ladder on **VHF channel 12**.
- Pilot boat works on **VHF channel 12**.

Cherbourg Pilot Station	PROCEDURE FOR DEEP SEA PILOT BOARDING/DISEMBARKING	ER-22.3	PCS 2 Embarquement - débarquement

REV D-20 06 2025

## MEANS

Deep sea Pilot boarding and disembarking will be carried out using **Cherbourg Pilot Boats**.

**OBSERVE STRICTLY OMI REQUIRED BOARDING ARRANGEMENT** (see last sheet of this procedure)

Please keep a speed around **7 Knots** and prepare heaving line.

Heaving line must be checked before use. Diameter must be between 8 and 18mm and safe working load minimum 300 kg.

## MEETING POINT FOR VESSEL **TANKERS, CHEMICALS and GAS CARRIERS**

7 NM North off Cherbourg breakwaters in position:  $\phi=49^{\circ}47.5' \text{ N}$  -  $G=001^{\circ}39.0' \text{ W}$

## MEETING POINTS **OTHERS SHIPS**

For vessel arriving by West, meeting point:  $\phi=49^{\circ} 44' \text{ N}$  -  $G=001^{\circ}39' \text{ W}$

For vessel arriving by Est, meeting point:  $\phi=49^{\circ} 44' \text{ N}$  -  $G=001^{\circ}37' \text{ W}$

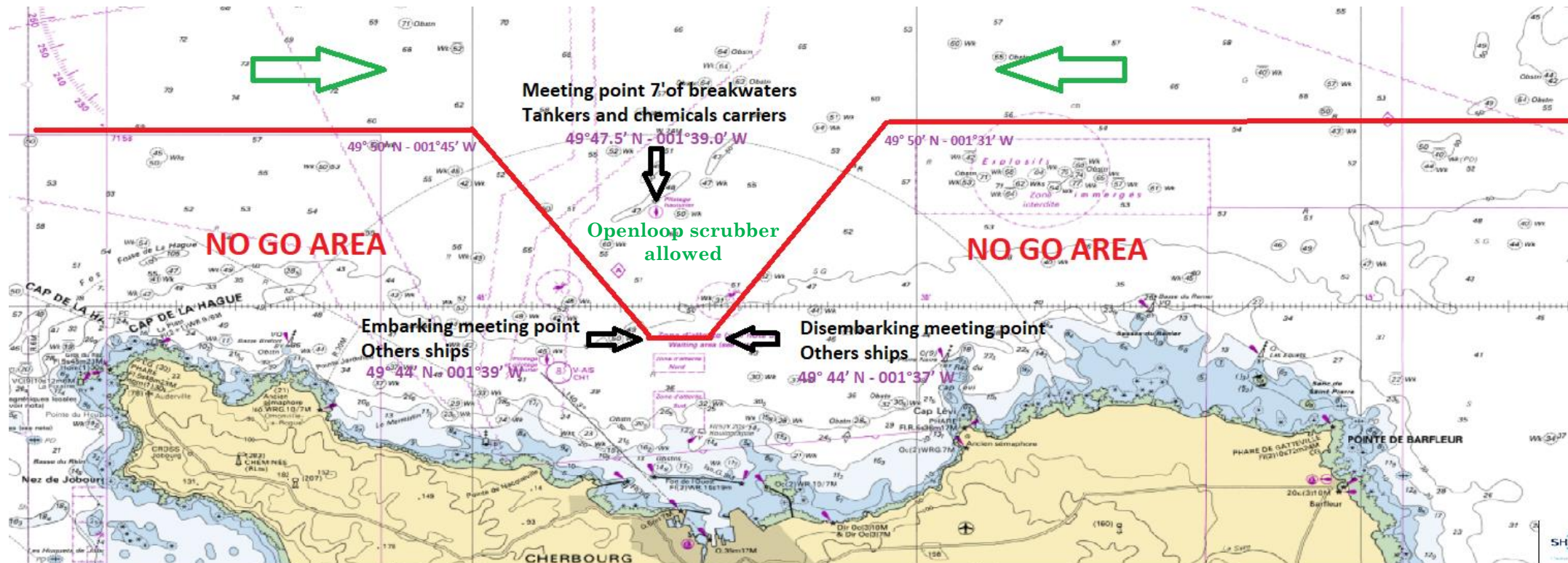
## SECA ZONE- SCRUBBER

### Cherbourg is located in MARPOL SECA Zone:

All vessel not fitted with scrubber must use diesel oil or very low sulphur fuel oil.

### Information concerning Open loop Scrubber

since 1<sup>st</sup> January 2022 vessel fitted with open loop scrubber are prohibited within 3 nautical miles from baselines due to French regulation. During pilot transfer in Cherbourg vessels fitted with open-loop scrubber must stay at all time north of  $49^{\circ}44' \text{ N}$ .



### IMPORTANT NOTICE

The operation **is not completed** until the pilot boat is clear after boarding or disembarking, without forgetting to keep a sharp lookout during **transfer of luggage**.

In order to perform safe operation, we kindly ask you to:

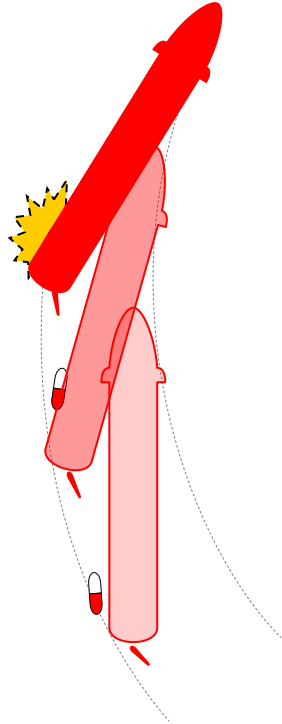
- **Maintain course and speed** ordered by pilot-boat
- **Keep lookout** on pilot boat **from the wing**
- **Keep watch** on **VHF 12**
- **Inform pilot boat** VHF 12 if you need to alter course and/or speed or for safety reason
- **Wait confirmation** of pilot boat before altering to your intended transit course and speed

**NOT ALLOWED**  
**NOT SAFE**

**Changing** course

**Increasing** speed

**No lookout**



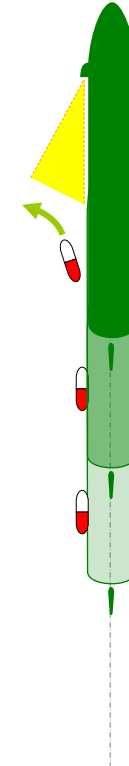
**TO BE FOLLOWED**  
**SAFE**

**Steady** Course & speed

**Lookout** Visual

**VHF 12**

Pilot boat clear from ship side





# REQUIRED BOARDING ARRANGEMENTS FOR PILOT



In accordance with SOLAS Regulation V/23 & IMO Resolution A.1045(27)  
**INTERNATIONAL MARITIME PILOTS' ASSOCIATION**  
 H.Q.S. "Wellington" Temple Stairs, Victoria Embankment, London WC2R 2PN Tel: +44 (0)20 7240 3973 Fax: +44 (0)20 7210 3518 Email: office@impahq.org  
 This document and all IMO Pilot-related documents are available for download at: <http://www.impahq.org>

