



## LAUNCH SERVICES FOR BOARDING AND DISEMBARKING OFF CHERBOURG



### CONTACTS

E-mail : [cherbourg.pilot@wanadoo.fr](mailto:cherbourg.pilot@wanadoo.fr)

Phone : + 33 (0) 233 205 123      mobile 24/24 : + 33 (0) 607 751 891

Address : Quai General Lawton Collins - 50100 Cherbourg – FRANCE

### PROCEDURE TO ARRANGE LAUNCH SERVICES OFF CHERBOURG

- **At least 3 days before arrival:** Vessel will advise **CHERBOURG PILOT STATION** with ETA by mail or by phone.
- **4 HOURS** before arrival at Pilot Boarding Position CH 1: vessel will call **JOBOURG TRAFFIC** on **VHF channel 13**.
- **2 HOURS** before arrival at Pilot Boarding Position CH1: Vessel will call **CHERBOURG SIGNAL STATION** to confirm ETA on **VHF channel 12**.
- **1 HOUR** before arrival at Pilot boarding Position CH1: vessel will call **CHERBOURG SIGNAL STATION** to confirm ETA and ask for the side of Pilot ladder on **VHF channel 12**.

**MEANS**

Boarding and disembarking will be carried out using **Cherbourg Pilot Boats**.

**OBSERVE STRICTLY OMI REQUIRED BOARDING ARRANGEMENT** (see last sheet of this procedure)

**In most case please prepare PILOT LADDER only.**

**If using COMBINATION LADDER then ACCOMODATION LADDER must be at least 5 Meters above the water**

Please keep a speed of **8 Knots** and prepare heaving line or nets.

Heaving line or nets must be checked before use. Diameter must be between 8 and 18mm and safe working load minimum 300 kg.

All boats are provided with AIS, three different pilot-boats can be used:

- “CHERBOURG-PILOT 2”
- or “CHERBOURG-PILOT 3”
- or “CHERBOURG-PILOT 4”

**Before and during transfer follow instructions given by Cherbourg Pilot boat**

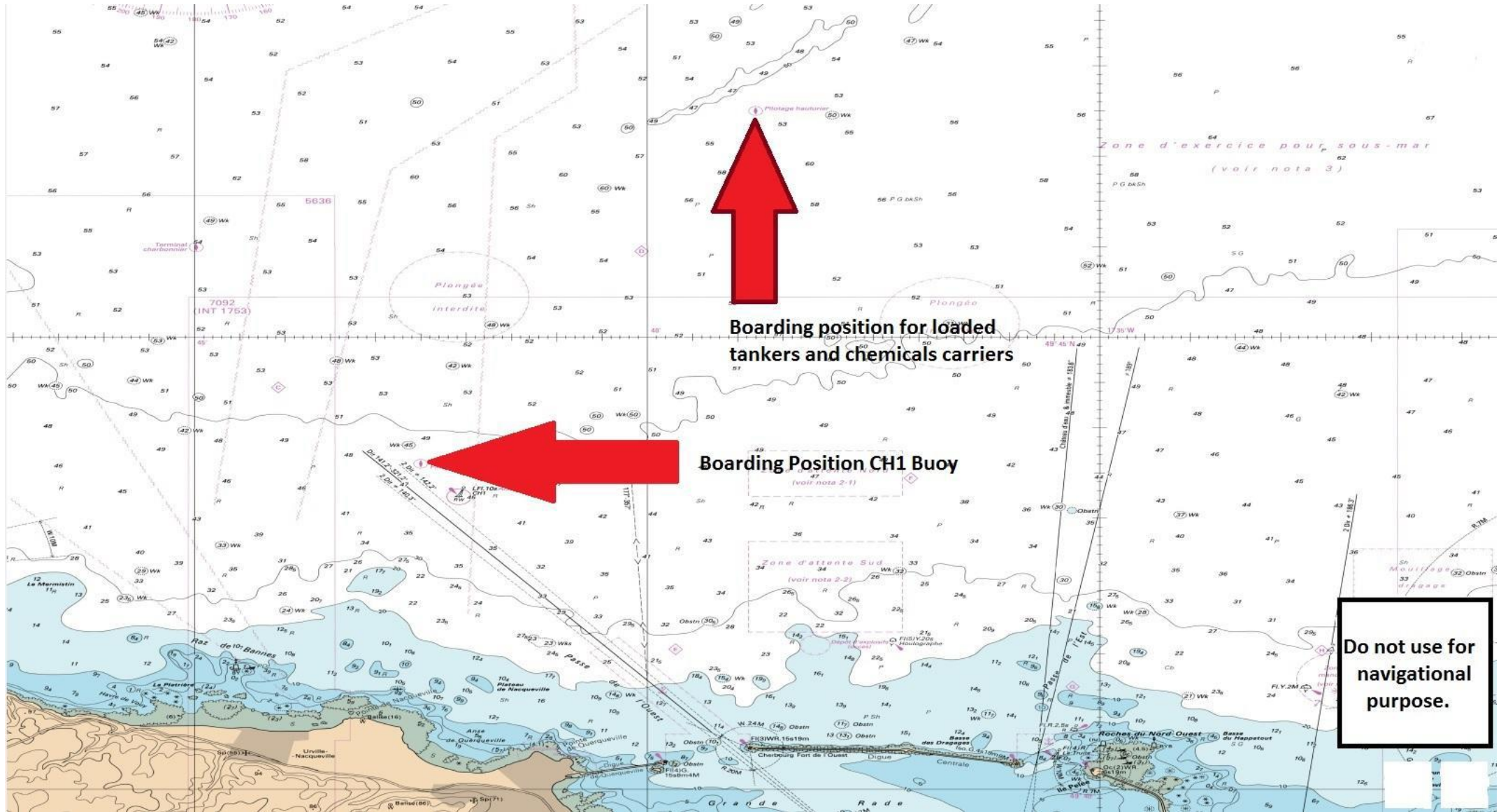
**BOARDING POSITIONS**

**If no dangerous goods on board:**

In the vicinity of safe water mark “CH1” in position:  $\phi=49^{\circ} 43.5' N - G=001^{\circ}42.0' W$

**NB:** CH1 mark is not a real buoy but a **VIRTUAL A.I.S. MARK** only visible on AIS display.

**For loaded tankers or chemicals carriers** → 7 NM North off Cherbourg breakwaters in position:  $\phi=49^{\circ}47.5' N - G=001^{\circ}39.0' W$



Boarding position for loaded tankers and chemicals carriers

Boarding Position CH1 Buoy

Do not use for navigational purpose.

# REQUIRED BOARDING ARRANGEMENTS FOR PILOT



INTERNATIONAL MARITIME ORGANIZATION

In accordance with SOLAS Regulation V/23 & IMO Resolution A.1045(27)

INTERNATIONAL MARITIME PILOTS' ASSOCIATION

H.Q.S. "Wellington" Temple Stairs, Victoria Embankment, London WC2R 2PN Tel: +44 (0)20 7240 3973 Fax: +44 (0)20 7210 3518 Email: office@impahq.org

This document and all IMO Pilot-related documents are available for download at: <http://www.impahq.org>

