



CHERBOURG PILOT STATION FOR CHANNEL AND NORTH SEA PILOTS SERVICES



CONTACT

E-mail : cherbourg.pilot@wanadoo.fr

Phone : + 33 (0) 233 205 123 mobile 24/24 : + 33 (0) 607 751 891

Address : Quai General Lawton Collins - 50100 Cherbourg – FRANCE

PROCEDURE FOR DEEP SEA PILOT BOARDING AND DISEMBARKING OFF CHERBOURG

- **At least 3 days before arrival:** Vessel will advise **CHERBOURG PILOT STATION** with ETA by mail or by phone.
- **4 HOURS** before arrival at Pilot Boarding Position CH 1: vessel will call **JOBOURG TRAFFIC** on **VHF channel 13**.
- **2 HOURS** before arrival at Pilot Boarding Position CH1: Vessel will call **CHERBOURG SIGNAL STATION** to confirm ETA on **VHF channel 12**.
- **1 HOUR** before arrival at Pilot boarding Position CH1: vessel will call **CHERBOURG SIGNAL STATION** to confirm ETA and ask for the side of Pilot ladder on **VHF channel 12**.

MEANS

Deep sea Pilot boarding and disembarking will be carried out using **Cherbourg Pilot Boats**.

OBSERVE STRICTLY OMI REQUIRED BOARDING ARRANGEMENT (see last sheet of this procedure)

In most case please prepare PILOT LADDER only.

If using COMBINATION LADDER then ACCOMODATION LADDER must be at least 5 Meters above the water

BOARDING POSITIONS

In the vicinity of safe water mark "CH1" in position: $\Phi=49^{\circ} 43.5' N - G=001^{\circ}42.0' W$

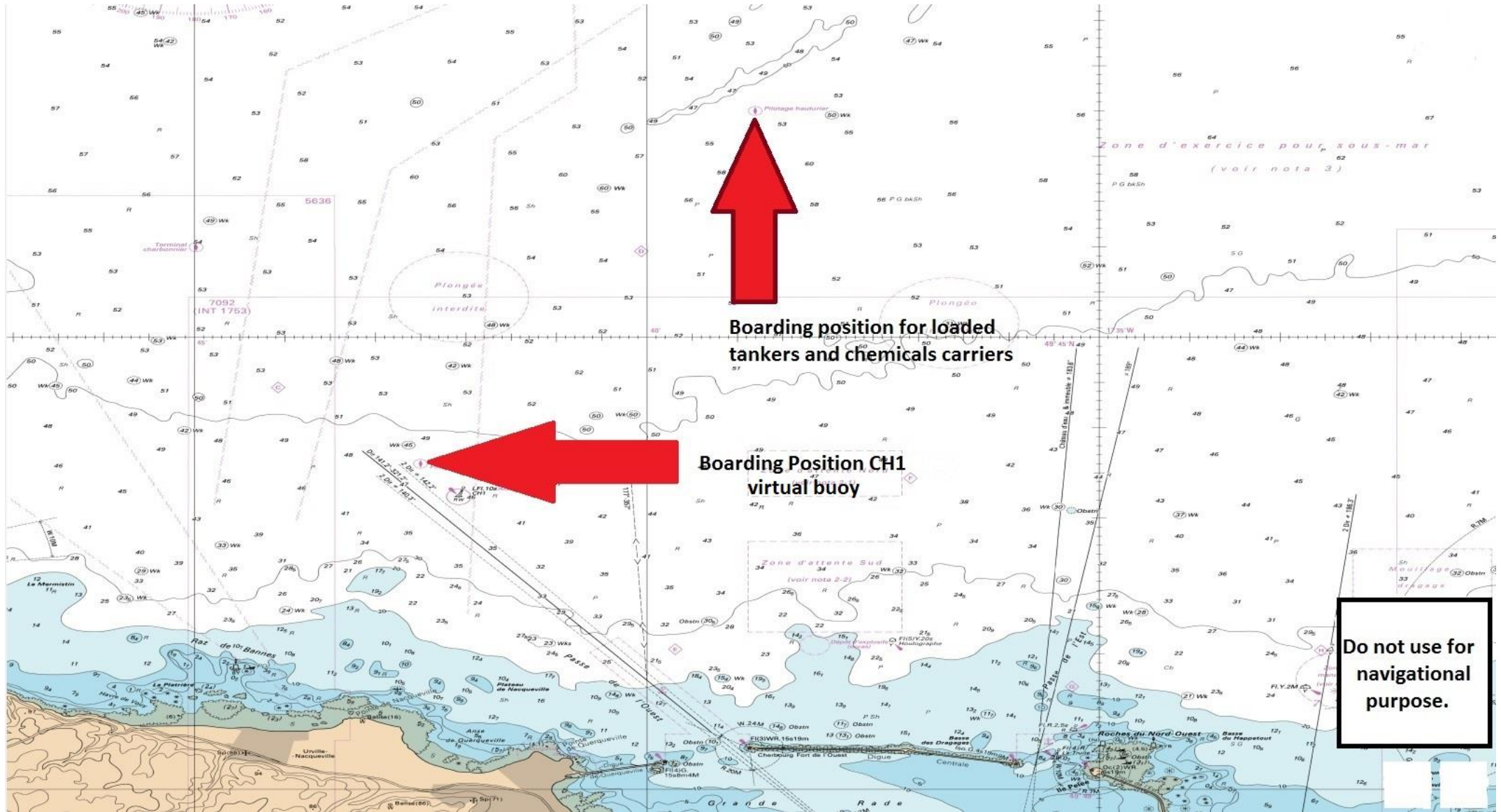
NB: CH1 mark is not a real buoy but a **VIRTUAL A.I.S. MARK** only visible on AIS display.

For loaded tankers or chemicals carriers → 7 NM North off Cherbourg breakwaters in position: $\Phi=49^{\circ}47.5' N - G=001^{\circ}39.0' W$

DISEMBARKING POSITIONS

3 NM North of eastern entrance off Cherbourg in position: $\Phi=49^{\circ}43.0' N - G=001^{\circ}36.0' W$

For loaded tankers or chemicals carriers → 7 NM North off Cherbourg breakwaters in position: $\Phi=49^{\circ}47.5' N - G=001^{\circ}39.0' W$



Boarding position for loaded tankers and chemicals carriers

Boarding Position CH1 virtual buoy

Do not use for navigational purpose.

REQUIRED BOARDING ARRANGEMENTS FOR PILOT



INTERNATIONAL MARITIME ORGANIZATION

In accordance with SOLAS Regulation V/23 & IMO Resolution A.1045(27)

INTERNATIONAL MARITIME PILOTS' ASSOCIATION

H.Q.S. "Wellington" Temple Stairs, Victoria Embankment, London WC2R 2PN Tel: +44 (0)20 7240 3973 Fax: +44 (0)20 7210 3518 Email: office@impahq.org

This document and all IMO Pilot-related documents are available for download at: <http://www.impahq.org>

